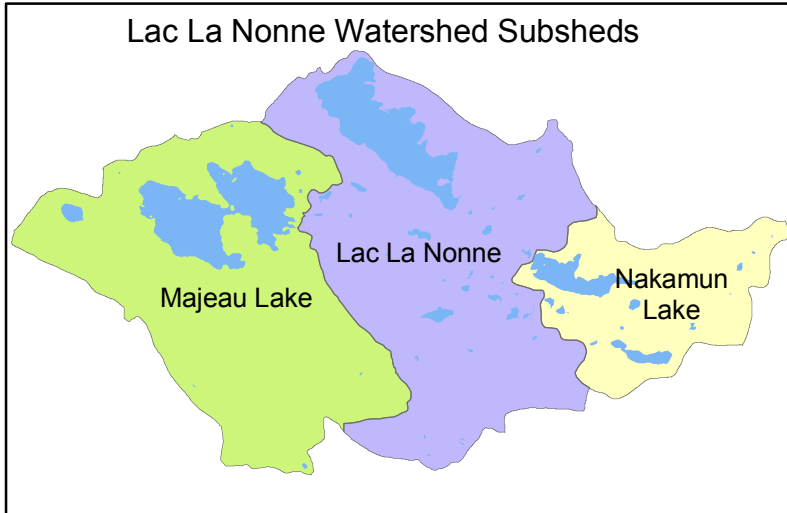


# Lac La Nonne Watershed - Topography



**Legend**

— Contours (10m)

**Elevation (masl)**

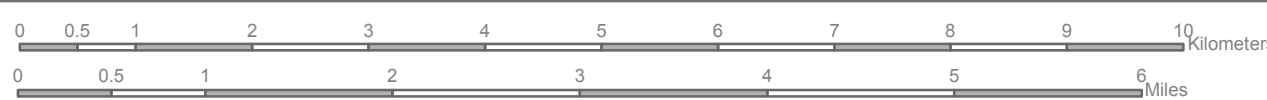
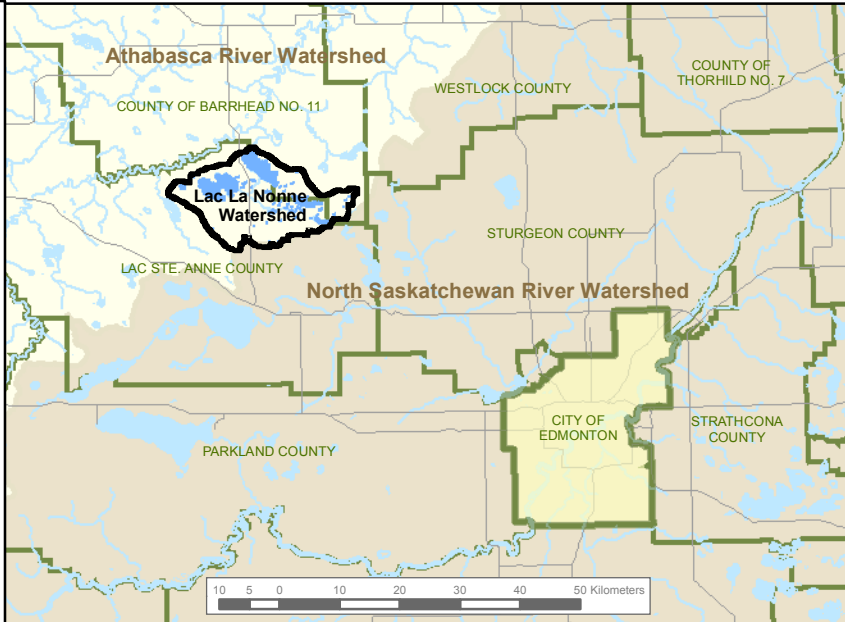
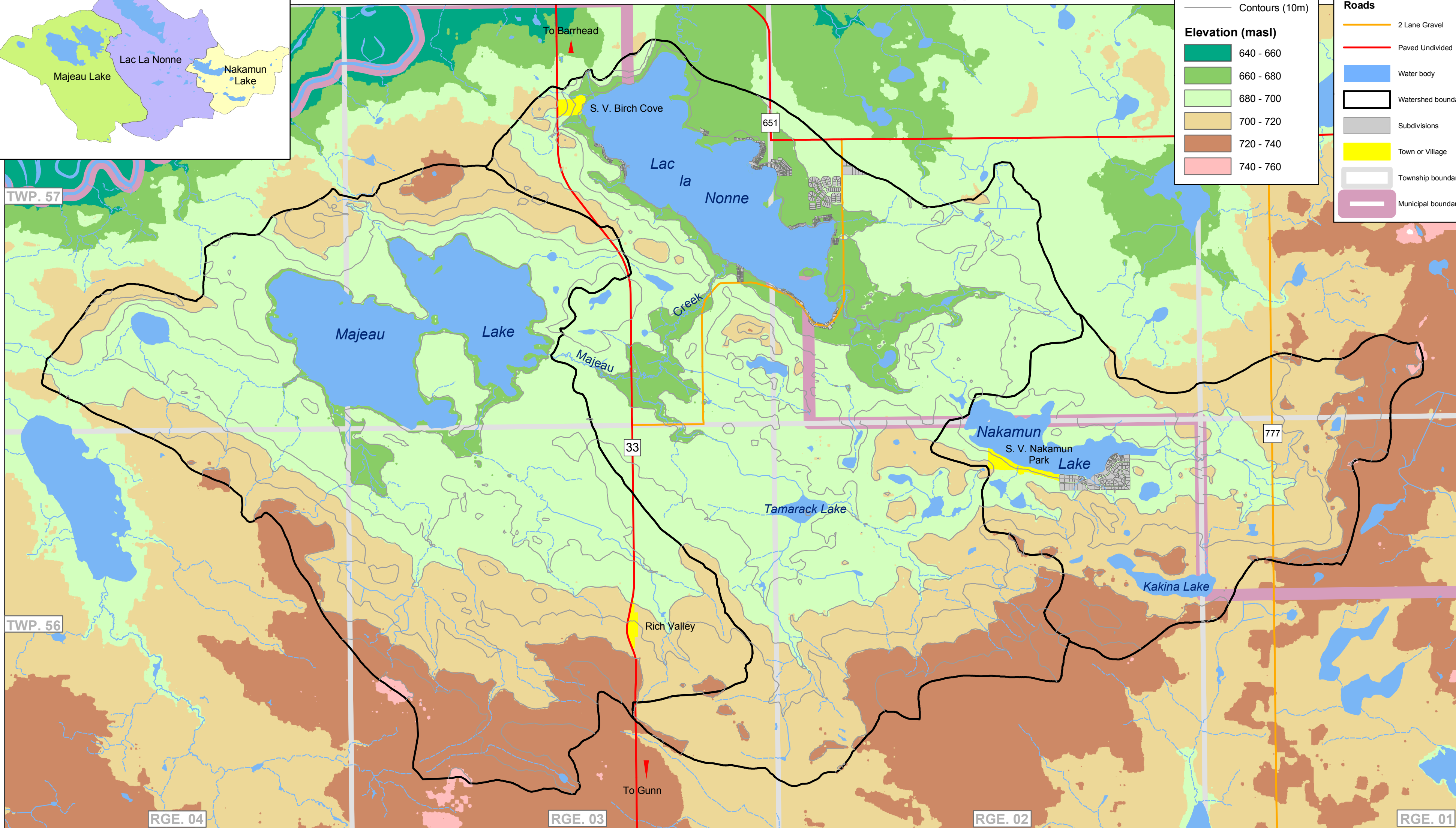
- 640 - 660
- 660 - 680
- 680 - 700
- 700 - 720
- 720 - 740
- 740 - 760

**Base Features**

**Roads**

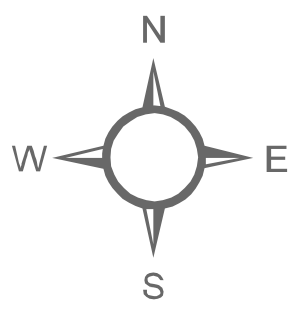
- 2 Lane Gravel
- Paved Undivided

- Water body
- Watershed boundary
- Subdivisions
- Town or Village
- Township boundary
- Municipal boundary



Data Sources\*:  
 Spatial Data Warehouse - Base data  
 Agriculture and Agri-Food Canada - Contours, Digital elevation model, Township and Municipal boundaries  
 Alberta Environment - Watershed boundary  
 County of Barrhead No. 11 - Town and Village boundaries, Subdivisions  
 Lac Ste. Anne County - Town and Village boundaries, Subdivisions

Map prepared: June, 2006  
 Projection: Alberta 10TM  
 Datum: NAD 1983  
 Scale = 1:65 000



\*These digital data sets may contain errors or omissions. Agriculture and Agri-Food Canada makes no representations or warranties whatsoever as to the content of these files, and accepts no responsibility for any damage, claims, or liability whether direct or indirect, that may result from their use.

