













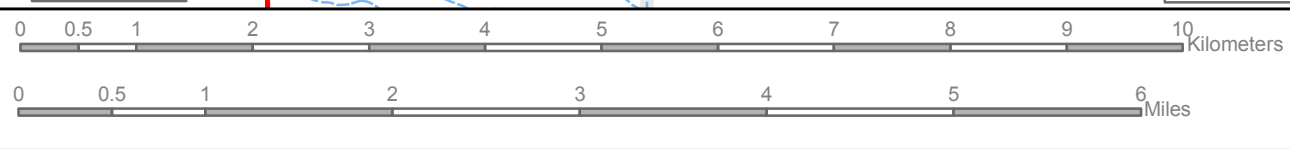
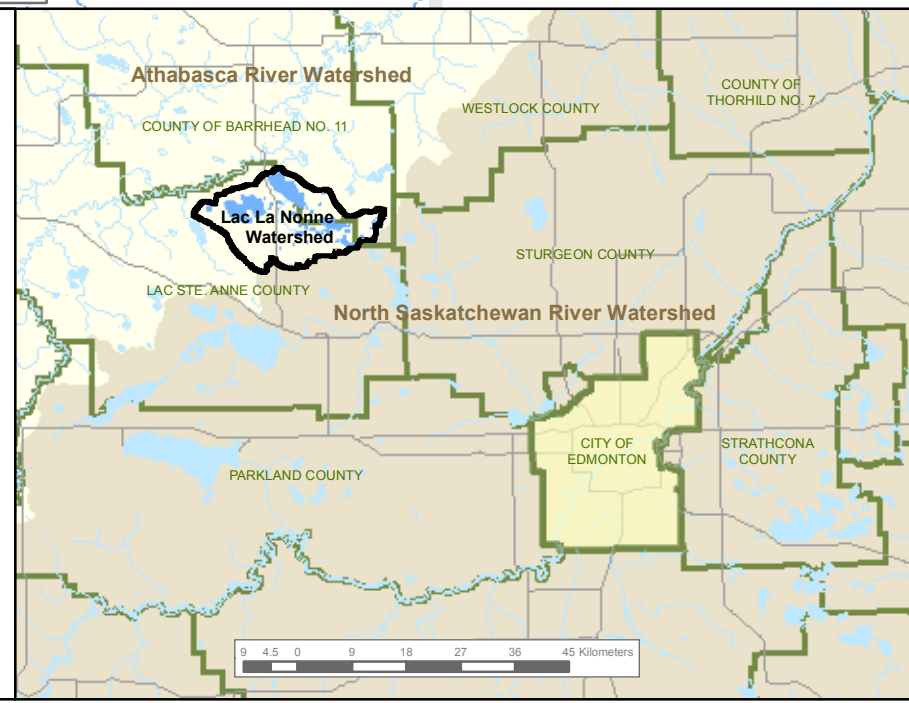
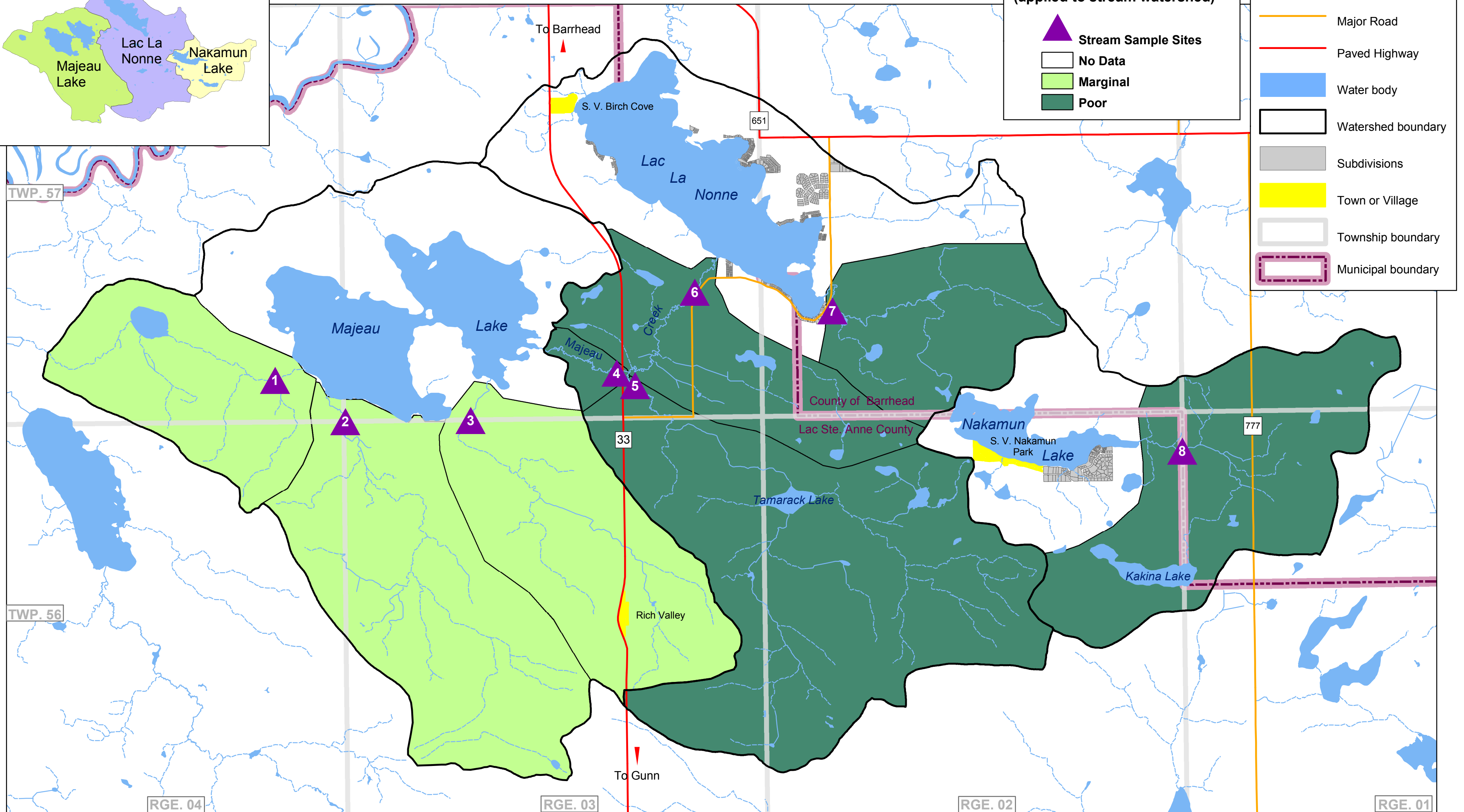
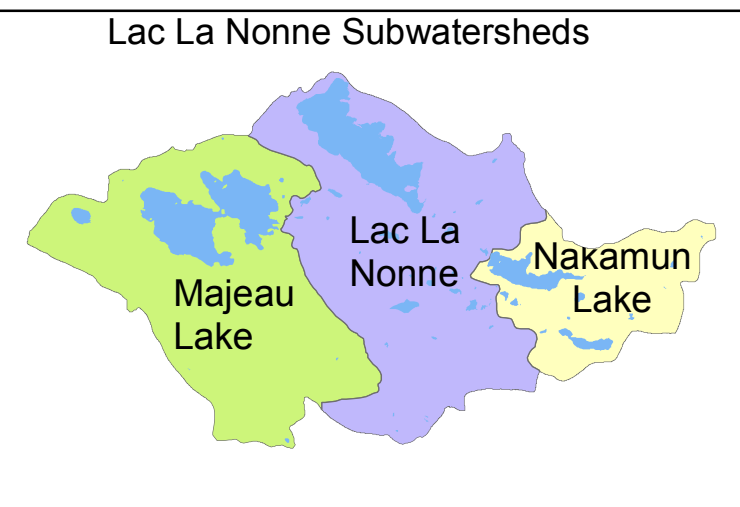
Lac La Nonne Watershed - Water Sampling (2005)

2005 Water Quality Index Rating (applied to stream watershed)

-  Stream Sample Sites
-  No Data
-  Marginal
-  Poor

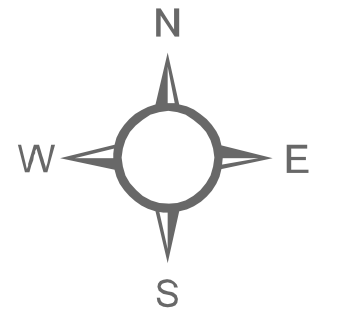
Base Features

-  Major Road
-  Paved Highway
-  Water body
-  Watershed boundary
-  Subdivisions
-  Town or Village
-  Township boundary
-  Municipal boundary



Data Sources*:
 Spatial Data Warehouse - Base data
 Agriculture and Agri-Food Canada - Hillshade, Township and Municipal boundaries
 Alberta Environment - Watershed boundary
 Lac La Nonne Enhancement and Protection Association - Water Sampling Data
 County of Barrhead No. 11 - Town and Village boundaries, Subdivisions
 Lac Ste. Anne County - Town and Village boundaries, Subdivisions

Map prepared: June, 2006
 Projection: Alberta 10TM
 Datum: NAD 1983
 Scale = 1:65 000



*These digital data sets may contain errors or omissions. Agriculture and Agri-Food Canada makes no representations or warranties whatsoever as to the content of these files, and accepts no responsibility for any damage, claims, or liability whether direct or indirect, that may result from their use.