



# Lac La Nonne Watershed Stewardship Society

**Water is our natural heritage – Let's strive to preserve it**



## Who are we?

The LWSS is a non-profit registered Society working within the confines of the Lac La Nonne Watershed. It consists of local volunteers from the agricultural and recreational sector who are concerned with the quality of the water in the lakes and other water bodies within the watershed.

Assisting the volunteers are technical advisors from federal, provincial, and municipal governments as well as non-government organisations with common interests.

Meetings are held once a month at the Seniors' Lac La Nonne Lakeside Recreational Club House (Highway 33, Twsp. Rd 575) and the public is welcome to attend at any time.

## LWSS Mandate:

"The Lac La Nonne Watershed Stewardship Society (LWSS) is a group of volunteers dedicated to improving, enhancing & protecting the Lac La Nonne watershed health for all watershed inhabitants, present and future."

**LWSS Membership** is open to anyone residing or with interest in the Lac La Nonne watershed area including from Lac La Nonne, Nakamun Lake, Majeau Lake, agriculture, hamlets, and summer villages. There is NO fee to join but contact information is requested for correspondence.

## What are we doing?

- Commissioned *State of the Lac La Nonne Watershed Report* (October 2006). It is complete and guides many of our activities.
- Supporting research relevant to understanding current water/land status and condition. Working with various partners to seek solutions to the issues we face.
- Supporting education/awareness programs to build the knowledge of watershed residents and visitors (adults and youth) about lake process, current conditions and patterns, and impacts of human activities.
- Having Fun with our Annual Social & Volunteer Appreciation Awards, and special meetings and/or events throughout the year to celebrate our volunteers.
- Providing a forum for communication, debate, and planning coordination among representatives of the Lac La Nonne watershed community. Connecting with other watershed groups around Alberta and Government of Alberta initiatives.

## What can you do?

- Stay informed about the work of the LWSS by visiting our web site at [www.laclanonnewatershed.com](http://www.laclanonnewatershed.com)
- Ask to be put on the LWSS information update list by emailing [laclanonne@shaw.ca](mailto:laclanonne@shaw.ca)
- Volunteer to help with LWSS education/awareness and research programs in the watershed
- Consider becoming a LWSS Board Member or Project Champion when openings arise

## Contact Us:

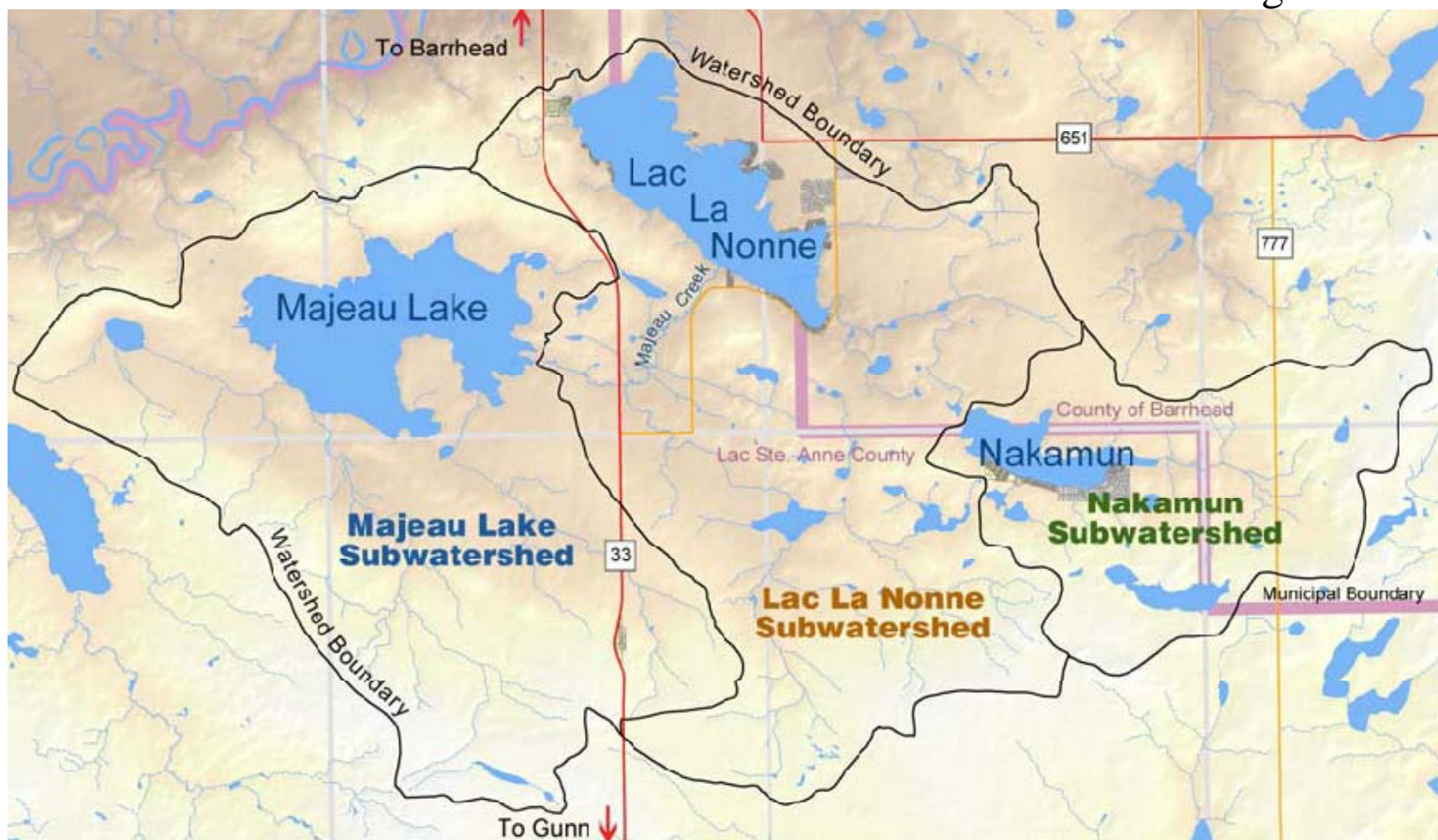
Site 17, Box 22, RR1  
Gunn, AB T0E 1A0

Phone  
780-436-8260

Email  
[laclanonne@shaw.ca](mailto:laclanonne@shaw.ca)

Website  
[www.laclanonnewatershed.com](http://www.laclanonnewatershed.com)

## Selected Features in the Lac La Nonne Watershed and Surrounding Area



Source: *Your Lake Handbook - Lac La Nonne – Our Playground, Our Home, Our Responsibility* (WERG, LEPA 2008)

	Drainage Basin Area	Lake Area	Maximum Depth	Residence Time
<b>Lac La Nonne<sup>a</sup></b>	129.91 km <sup>2</sup>	12.28 km <sup>2</sup>	20 m	6.5 years
<b>Nakamun Lake<sup>b</sup></b>	48.58 km <sup>2</sup>	3.54 km <sup>2</sup>	8 m	21 years
<b>Majeau Lake</b>	102.64 km <sup>2</sup>	12.14 km <sup>2</sup>	1.2 m	N/A

<sup>a</sup>Data from Alberta Environment (1980) <sup>b</sup>Data from Mitchell and Prepas (1990)

Adapted from: Lac La Nonne State of the Watershed Report (2006) Aquality Environmental Consulting Ltd.